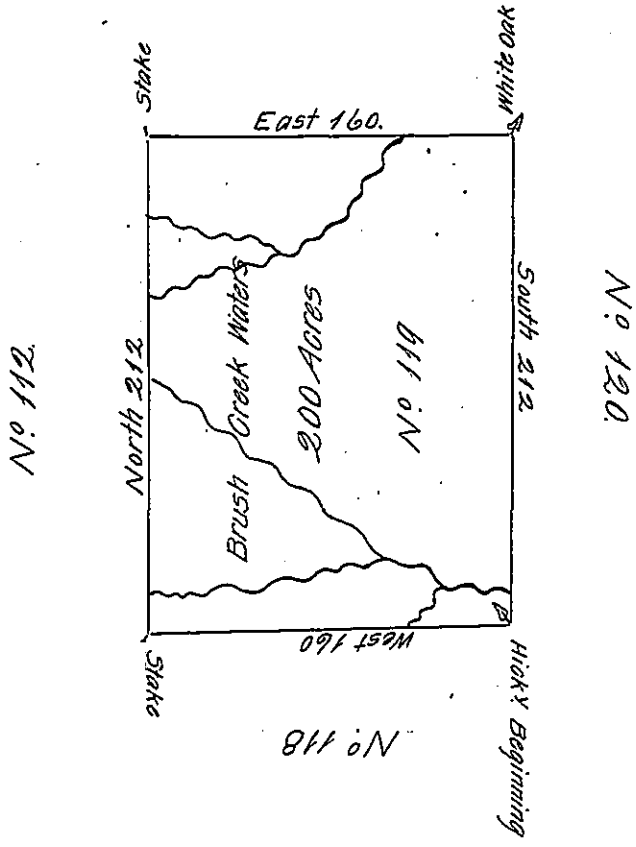


Part of District No 2.



The above is a Draught of a Survey made in the Month of July 1785 In Pursuant to instructions from the Surveyor General Dated 22nd Day of January 1785 Situate on Brush Creek Waters in District No 2. Containing two Hundred Acres With Allowance of 6 Per Cent.

Dan^l Leet D.S.

To

John Lukens Esq. Surv. Gen.

IN TESTIMONY that the above is a copy of the original remaining on file in the Department of Internal Affairs of Pennsylvania, made conformably to an Act of Assembly approved the 16th day of February, 1833, I have hereunto set my Hand and caused the Seal of said Department to be affixed at Harrisburg, this twenty second day of November 1905.

Lea C. Brown
Secretary of Internal Affairs.